

2015 / 11

N. 11



www.acs.it

ACS
Artigianato Creative Space

N. 11 NOV. 2015

Casa VR Tapanin

Charming Zoo

Interrato House

City of White

James Drake

Aedas

House with a View

— Merging design with landscape

112061200 4000



112061200 4000

112061200 4000
112061200 4000
112061200 4000

Architects | A-cero, Joaquin Torres & Rafael Llamazares architects
Location | Phuket, Thailand

Iniala Beach House



The project developer entrusted to A-cero the interior design of two rooms of one of the villas, concretely the Villa Bianca. A-cero have designed absolutely everything, even the furniture.

Both rooms designed by A-cero are on the seafront. Two shell shape bungalows sharing an exterior swimming pool. Both elements play with each other and A-cero tried to achieve the opposite interior design between them. In the first room, the vertical lines flow introducing into the sight of the visitor. In the second room the curved lines move horizontally embracing the space around. It is a game of vertical and horizontal lines that wrap the space. Looking for the "yin & yang" and different sensations for each other. The furniture of the rooms is born in each of the curved lines that create the rooms. The natural local wood is used for the floors and the walls of the rooms, looking for a natural environment according to the exuberant surroundings. In each of these rooms A-cero have changed the disposition of the elements to make them different. The first room has light wood horizontal sense floor and dark wood ceiling. The second room is the opposite, with dark wood vertical sense floor and light wood ceiling.



The exclusive A-zero design furniture for this project is made with high quality polycarbonate in order not to see any joint. The white colour is used to make easier the introduction of the light inside.

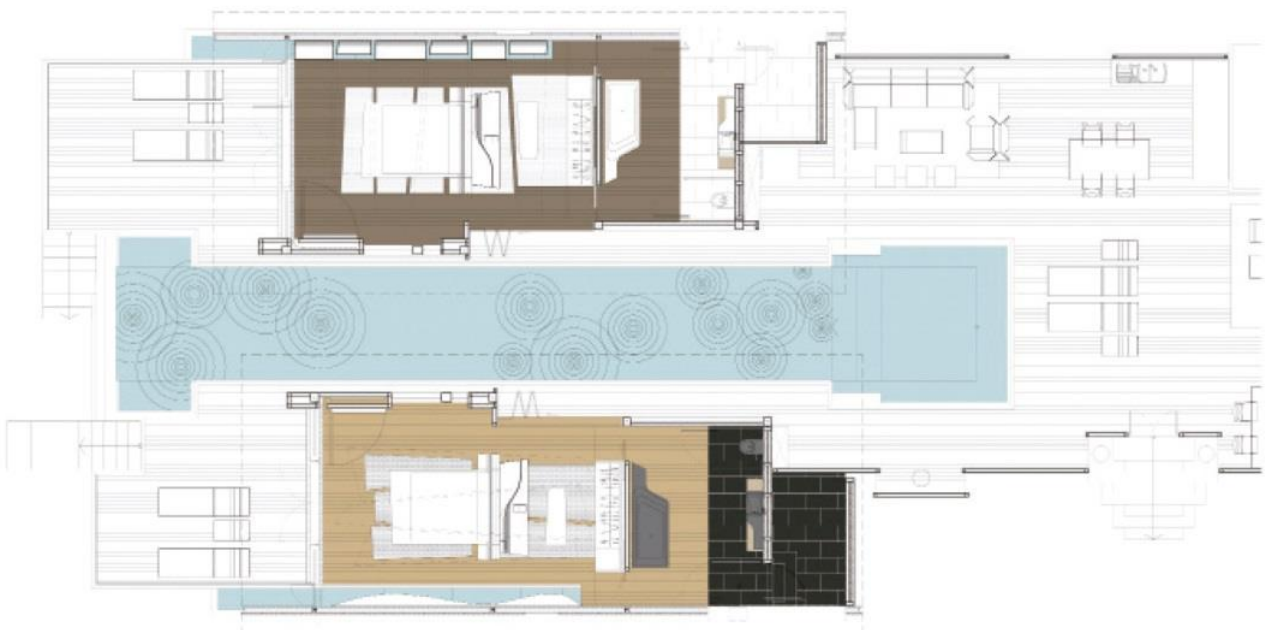
The curved lines described previously conform each unique furniture piece, obtaining a head bed sculpturally joined with the ceiling. Moreover some of the lights for the room are included in the bed head.

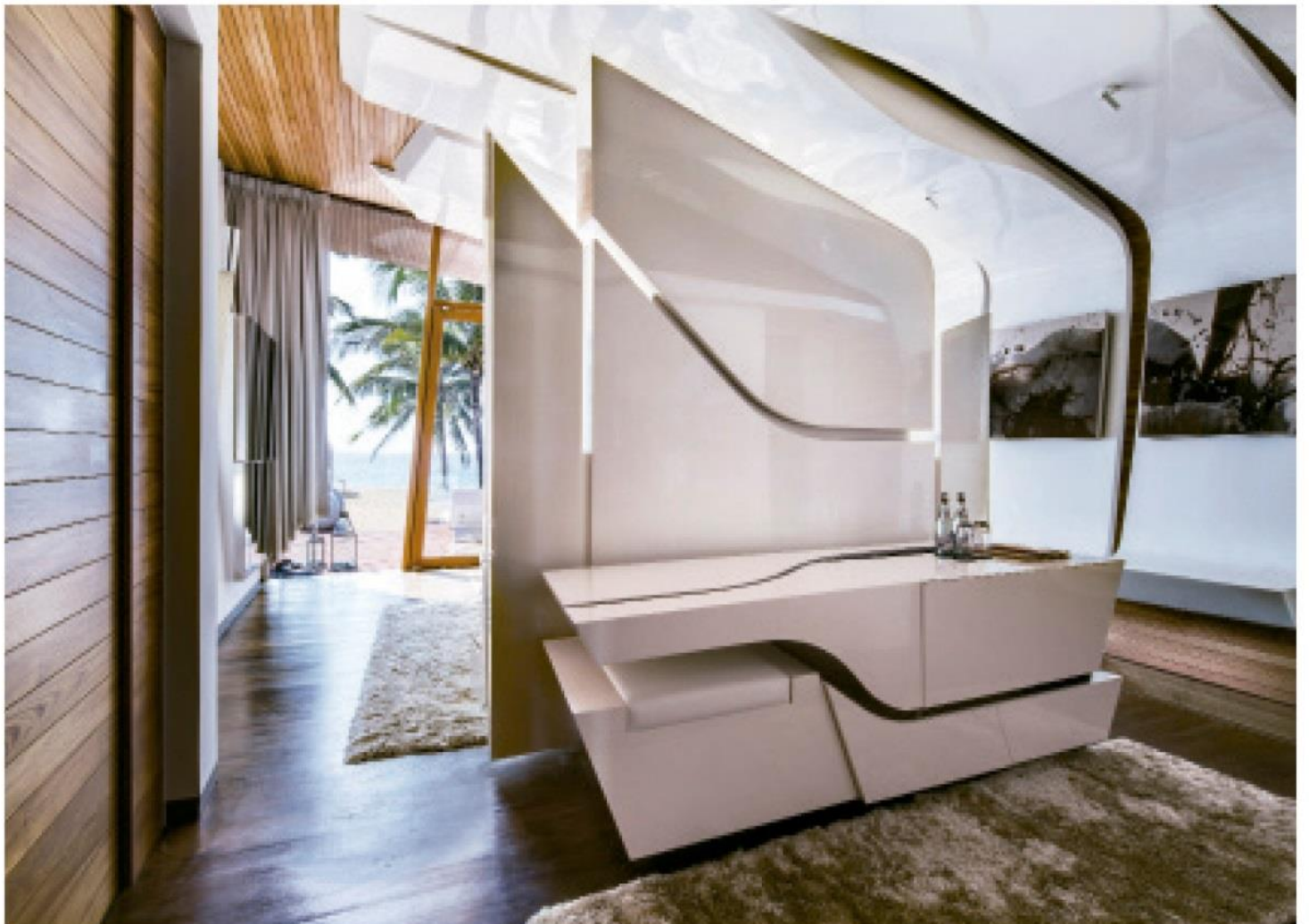


DESIGN KEYWORDS

A Game of
Vertical and
Horizontal Lines

Removable
Modules







The head bed becomes an exclusive A-cero design dressing table, characterized by its forms, which are similar to the rest of the room. This dressing table is also very versatile, it has different removable modules like mirror, drawers, magazine rack, lockbox, fridge, coffee machine, speakers to connect different devices and several compartments that are deployed to use them and collected to keep everything tidy. This dresser is a large area in connection with the other bathroom departments: shower, bathtub, washbasin and toilet.

The wide windows fill practically all the main façade of the room and the guest overlooks to the outdoor landscape – the beach – through the porch and the own swimming pool. The wood pavement is continued to the porch. This area is also equipped with A-cero design furniture, the "Rest" collection for Vondom.

